

Exceptional Learning in Year 5

All the children in year 5 have been exploring the Caribbean as part of their Geography topic. Take a look at the fantastic example of a 3D interactive map made by Shania in 5D. **Well done!**



****Attention Nursery Parents****

THIS IS YOUR FINAL CHANCE TO COMPLETE A RECEPTION FORM—APPLICATION DUE MONDAY

As your child is in Nursery, you will need to apply for a primary school by **15th January 2018**.

Applications are to be done online at

www.eadmissions.org.uk. To get more information about applying for schools as well as to sign up for open day reminders and tips, you can visit

www.lewisham.gov.uk/primaryadmissions.

Should you need any help with your application, please speak with either Ms Purkiss or the Nursery staff.

Theme for January - Excellence

Daily ripples of excellence over time become a tsunami of success.

Robin S. Sharma

quote fancy

Child Absence

If your child is off school, please ensure that you call the school to inform us. The school number is **02086985001** and you will need to select **option 1** to report a child's absence. An example of an absence will be if they are sick or if they have a full day appointment. If your child does have an appointment, please bring us a letter or appointment card before the day.

Nursery Gate

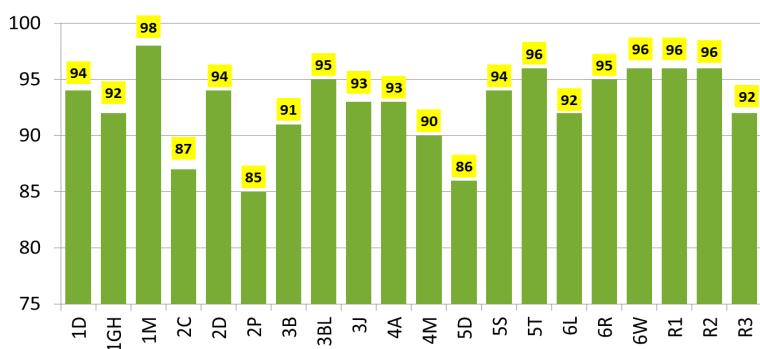
Reminder to parents on Wednesdays, Nursery parents must use the Nursery Gate **ONLY** on Penerley Road when collecting/dropping off children.

This is to minimise disruption and to safeguard children who will be in the playground during lunchtime.

Changes to Yr 3 Entrance in the Mornings

From Monday 15th January 2018, we ask that the Year 3 children enter the school through the Year 5 entrance. The doors will be labelled clearly to avoid confusion and a member of staff will be there to guide the children. All other children should enter the school through their usual entrances.

Well done to everyone who achieved 100% attendance



Well done to everyone who got no late marks this week

