

## Chickenpox

Please be aware that there have been reported cases of chickenpox in Reception and Year 1. Please check to see if your child has any new rashes or spots and get them checked as soon as possible.

## OFSTED

The report for the recent Ofsted inspection is available on the Ofsted website as well as the school website.



## Placing Children At Risk

We have had another complaint from a resident on Penerley Road regarding inconsiderate parking, near misses and situations that put children at risk. Many of the residents believe that one of these near misses will one day result in an accident!

## Kitchen Inspection

The school kitchen was inspected by the Food Standards Agency this week. Thanks to our Catering manager, Mrs Koraltay and her team we were awarded the highest standard once again – ‘5 scores on the door’



## Theme for January – Unity

**WE ARE ONLY AS STRONG AS WE ARE UNITED AS WEAK AS WE ARE DIVIDED**  
—JK ROWLING  
HARRY POTTER AND THE GOBLET OF FIRE

## Absences During School Hours

Last term, there was an increasing number of students who were collected from school early due to a variety of reasons including dental and GP appointments. It is essential that pupils form good attendance habits at school at the earliest age and such absences impact the continuity of their education.

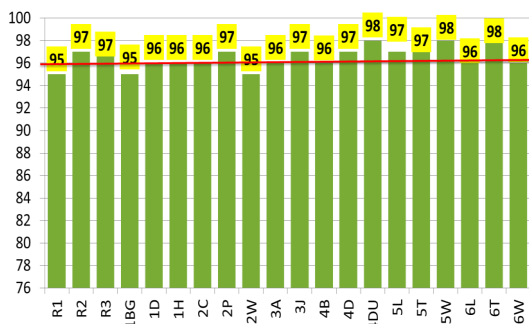
We kindly ask that you try to arrange appointments for your children outside of school hours or during school holiday. If the timing is unavoidable, such as hospital appointments, please provide the office with the appointment letter.

## Goodbye for Now

Charlotte Banning, one of our Nursery teachers, is going on Maternity Leave next week.



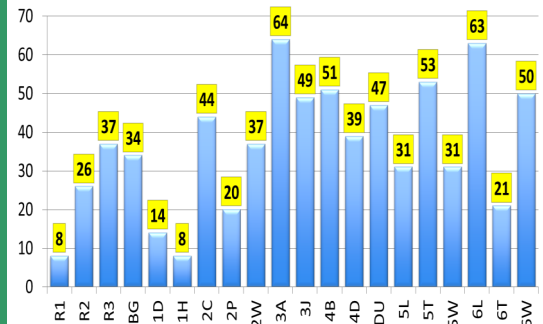
We all wish her well and look forward to seeing Baby Banning!!



**Congratulations**

Attendance ← 4Du, 5W & 6T—98%  
→ Punctuality R1 & 1H—8

**Complete Autumn Attendance**



**TERM DATES 2017-2018  
(INCLUDING SCHOOL HOLIDAYS AND INSET DAYS)**

AUTUMN TERM 2017		
Return to school	6 <sup>th</sup> September	19 <sup>th</sup> October
Half Term	23 <sup>rd</sup> October	27 <sup>th</sup> October
Return to school	30 <sup>th</sup> October	20 <sup>th</sup> December
SPRING TERM 2018		
Return to school	3 <sup>rd</sup> January	9 <sup>th</sup> February
Half Term	12 <sup>th</sup> February	16 <sup>th</sup> February
Return to school	19 <sup>th</sup> February	29 <sup>th</sup> March
Easter Break	30 <sup>th</sup> March	13 <sup>th</sup> April
SUMMER TERM 2018		
Return to school	16 <sup>th</sup> April	24 <sup>th</sup> May
Half Term	28 <sup>th</sup> May	1 <sup>st</sup> June
Return to school	4 <sup>th</sup> June	20 <sup>th</sup> July

**INSET DAYS (5) - NO CHILDREN IN SCHOOL**

4 <sup>th</sup> September 2017	Staff INSET
5 <sup>th</sup> September 2017	Staff INSET
20 <sup>th</sup> October 2017	Parent Teacher Consultation
2 <sup>nd</sup> January 2018	Staff INSET
25 <sup>th</sup> May 2018	Report writing

**2018 Bank Holidays**

30 <sup>th</sup> March 2018	Good Friday
2 <sup>nd</sup> April 2018	Easter Monday
7 <sup>th</sup> May 2018	Early May Bank Holiday
28 <sup>th</sup> May 2018	Spring Bank Holiday

## Dates for your Diary

**Tuesday 10<sup>th</sup> January**

- 9am Coffee Morning, all Parents invited

**Friday 13<sup>th</sup> January - 9.10am**

- **Phonics Screening Test Information for Year 1 Parents Workshop**

**Friday 20<sup>th</sup> January - 9.10am**

- **KS2 SATs information for Year 6 Parent Workshop**

**Monday 23<sup>rd</sup> January – Bikeability Week for Year 6**

**Thursday 26<sup>th</sup> January**

- 9am Coffee Morning, all Parents invited

**Friday 27<sup>th</sup> January**

- 9.00-9.20am Parents in Year 1 & 2 classes invited to read to children in class
- **9.30am - KS.1 SATs information for Year 2 Parent Workshop**

**Thursday 2<sup>nd</sup> February**

- 9.10am – Phonics Parent Workshop – Part 1 initial code

**Monday 6<sup>th</sup> February**

- 9am Coffee Morning, all Parents invited

**Tuesday 7<sup>th</sup> February - 3pm – Cake Sale**

**Thursday 23<sup>rd</sup> February**

- 9.10am – Phonics Parent Workshop – Part 2 Extended Code