



Rushey Greenpaper

Enjoying the present and preparing for the future

www.rusheygreen.lewisham.sch.uk

Issue 26

Keeping you up to date

Friday 20th April 2018

Dinner Money

Balances must be kept up to date. If your child's dinner account is in arrears, please give this your urgent attention. Parents can check their balances anytime on by contacting the school office. Just to remind you school dinners should be paid in advance.

Reminder that meal options may only be changed every half term. Once you have started on a meal option, you must not change throughout the term. i.e. if you start on school dinners, you cannot change to packed lunch until the next half term.



The dinner money cost for Summer 1 is £56.

Please make payment via ParentPay.

Clubs

Clubs will be starting on Monday. You will need to collect your child/ren at 4:30pm from your collection point in Culverley Playground. You can look at your collection point in the notice board situated in Culverley Playground.

Chicken Pox

There have been reported cases of chicken pox within school. Please check to see if your child has any new rashes or spots and get them checked as soon as possible. You can find more information on chicken pox on NHS Choices: www.nhs.uk

Theme for Summer 1—Resilience

WHEN SOMETHING GOES WRONG IN YOUR LIFE, JUST YELL "PLOT TWIST!" AND MOVE ON

Upcoming Events

Wednesday 25th April—9am RGSA Coffee Morning

Thursday 26th April—Year 2 to Horton Kirby

6pm Year 5 Kingswood Parents Meeting

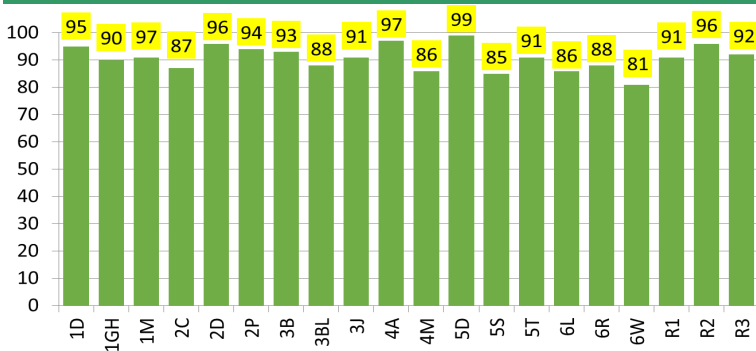


Absences During School Hours

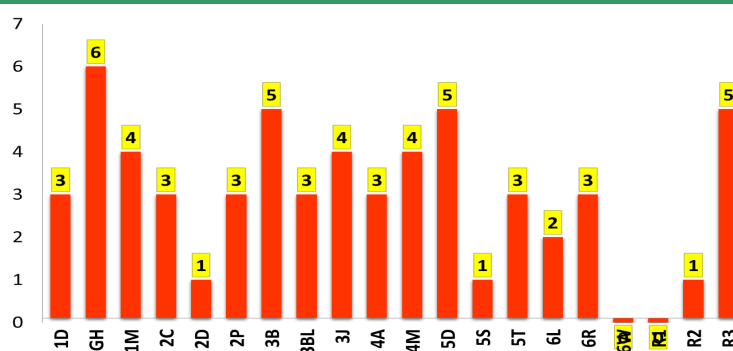
Last term, there was an increasing number of students who were collected from school early or being brought to school late due to a variety of reasons including dental and GP appointments. It is essential that pupils form good attendance habits at school at the earliest age and such absences impact the continuity of their education.

We kindly ask that you try to arrange appointments for your children outside of school hours or during school holiday. If the timing is unavoidable, such as hospital appointments, please provide the office with the appointment letter.

Well done everyone, let's aim for 100%!



Well done R1 and 6W!! 0 Lates!





Term Dates 2018/19



AUTUMN TERM 2018			Total Days
Return to school	5 th September 2018	18 th October 2018	32
Half Term	22 nd October 2018	26 th October 2018	
Return to school	29 th October 2018	21 st December 2018	40
SPRING TERM 2019			
Return to school	8 th January 2019	15 th February 2019	29
Half Term	18 th February 2019	22 nd February 2019	
Return to school	25 th February 2019	5 th April 2019	30
Easter Break	8 th April 2019	22 nd April 2019	
SUMMER TERM 2019			
Return to school	23 rd April 2019	23 rd May 2019	22
Half Term	27 th May 2019	31 st May 2019	
Return to school	3 rd June 2019	23 rd July 2019	37

INSET DAYS (5) - NO CHILDREN IN SCHOOL

3 rd September 2018	Staff INSET
4 th September 2018	Staff INSET
19 th October 2018	Parent Teacher Consultation
7 th January 2019	Staff INSET
24 th May 2019	Staff INSET

2018 Bank Holidays

19 th April 2019	Good Friday
22 nd April 2019	Easter Monday
6 th May 2019	Early May Bank Holiday
27 th May 2019	Spring Bank Holiday

Total: 195. In 2018/19 children should attend for 190 days (or 380 half sessions).
Teachers must be available to work for 195 days during the academic year.